

WSMTF

WATER SERVICES MAINTENANCE TRUST FUND

Why

Rural water infrastructure fails regularly and leaves communities, schools and healthcare facilities without safe water for weeks and often months (fig.1). This is a significant hardship for women, children and their families (fig. 2)

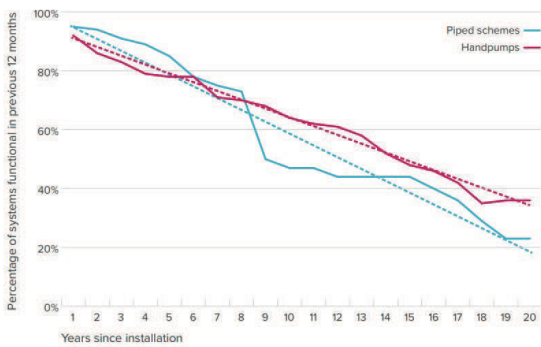


Fig 1: Survival curve for handpumps and piped schemes in Kitui county, Kenya. Source: Foster 2019



Fig.2: Long queues for drinking water in Mwingi North

What

Financial support to professional O&M service providers to guarantee repair failure events in a few days. Professional service delivery is much faster and reliable than community management which can take several weeks or months.

Mean repair time (days)

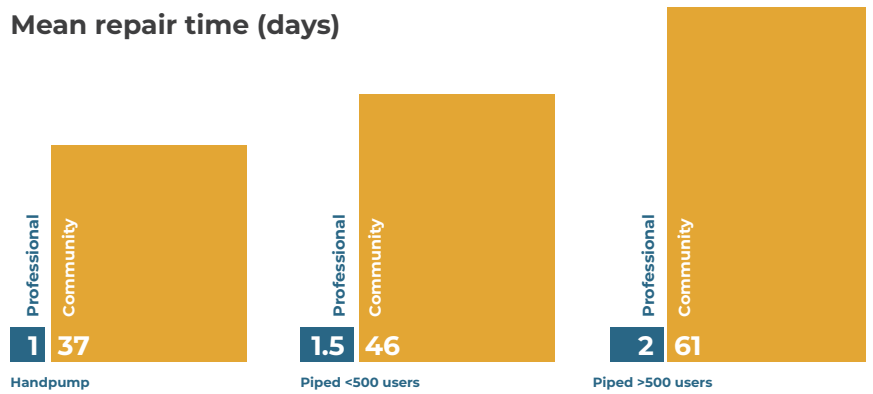


Fig. 3: Comparative repair time for breakdown Source: Foster 2019

How

Sustainable funding can break a cycle of wasted investments in building water infrastructure that fails, then is abandoned, and may be later rebuilt or replaced incurring unnecessary costs.

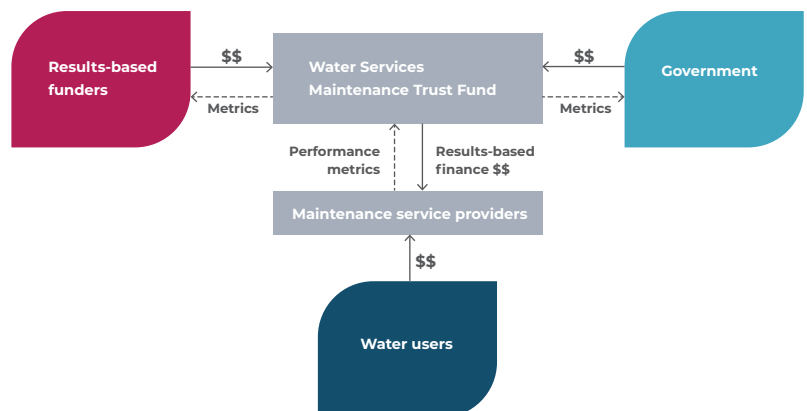


Fig. 4: Relationship among various stakeholders in rural water supply services

Proof of efficacy of Result Based Funding

Sustainable funding can break a cycle of wasted investments in building water infrastructure that fails, then is abandoned, and may be later rebuilt or replaced incurring unnecessary costs.

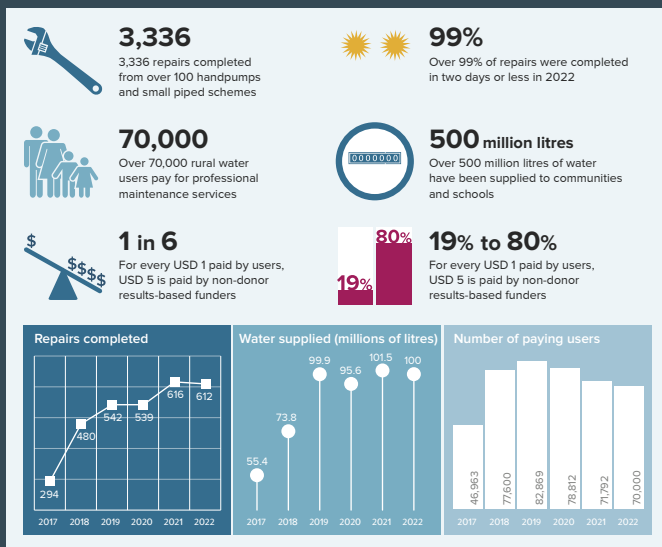


Fig. 5: Historical metrics from Kitui and Kwale Counties

Our People

Trustee



Prof Albert Mumma
University of Nairobi



Prof Robert Hope
University of Oxford



Joy Busolo
World Bank Group



Mike Thomas
Rural Focus Ltd

Staff



Eunice Owino
Partnership Manager
eunice.owino@wsmtf.org



Josphat Mukindia
Program Manager
josphat.mukindia@wsmtf.org

Strategic Goals

- 01** 320,000 people accessing reliable and potable water services by 2024
- 02** Strengthen data collection and verification
- 03** Support counties to design results-based contracts
- 04** Raise USD 1Million by end of 2024

Contacts

Water Services Maintenance Trust Fund (WSMTF)

- 📍 Westside Towers Third Floor, Off Lower Kabete Road, Westlands, Nairobi
- 📞 +254 113156269
- ✉️ info@wsmtf.org
- 🌐 <https://www.kituiwaterfund.org>

Our Partners

